



AIM Over 50 Archery Group Inc.

Member's Handbook

Edition: November 2023

Table of Contents

.....	1
AIM Over 50 Archery Group Inc.....	1
Member's Handbook.....	1
AIM OVER 50 ARCHERY GROUP (INC) – HOW IT ALL BEGAN.....	5
Safety Policy & Guidelines.....	8
Purpose.....	8
The aim of this document is to provide a set of minimum safety standards that allows the sport of Archery to be practiced in a safe and professional manner by AIM Members.....	8
Terms and Definitions.....	8
General Safety.....	9
Personal Equipment Safety.....	11
Arrows.....	11
Recurve Bow.....	11
Compound Bow.....	11
Release Devices.....	11
Target Practice.....	12
Field of Play Layout.....	12
Target Field of Play.....	12
Tournaments.....	12
Target and Clout Shoots.....	12
Adverse Weather Conditions.....	13
<i>Heat</i>	13
<i>Rain</i>	13
<i>Wind</i>	13
<i>Hail</i>	13
<i>Lightning</i>	14
<i>First Aid</i>	14
Working Bees and Club Maintenance.....	14
Membership.....	14
Membership is open to both ladies and gentlemen.....	14
Membership:.....	14
Membership entitlements:.....	15
Mondays at College Park, Nedlands or GSDA venue, Southern River.....	15
Tuesdays at Willetton Reserve, Willetton.....	15

Wednesdays at Thomas Oval, Kwinana.....	15
Thursdays at Halliday Park, Bayswater.....	15
Membership expectations:.....	15
Rules for Visitors.....	15
Archery Shooting Field.....	17
The Target shoot field:.....	17
The Clout Shoot Field.....	18
The AIM Archery System of Shooting Levels.....	19
Rules Governing Trophy Competition Shoots.....	20
Preamble.....	20
These are the Rules governing the conduct of the trophy competition shoots of AIM Over 50 Archery Group INC (the Group).....	20
General Rules Applicable to all Shoots, other than Clout and Ray Warman Consistency Trophy....	20
The May Fitzsimmons Championship Shoot.....	22
Controlled Level Shoots.....	22
The Level Shoot.....	23
Handicap Shoot.....	23
The Ray Warman Consistency Trophy.....	24
Clout.....	25
AIM Archery Weekly Competition Shoots.....	27
Definitions.....	27
Shoots: Shoots are the same for ladies and gents shooting, recurve, barebow, longbow or compound bows.....	27
All shoots (except clout) consist of three scored rounds, usually with a break between the second and third round. Two sighting ends are shot prior to the first round and one sighting end prior to the third round. This enables the archer to adjust the bow sight as required.....	27
Targets:.....	27
AIM Recognised Shoots:.....	27
Rebounding arrows:.....	28
AIM has adopted the following policy with respect to rebounding arrows:.....	28
Lost arrows:.....	28
Level Charts.....	29
Female Barebow Compound.....	29
Female Barebow Recurve.....	30
Female Compound.....	31
Female Longbow.....	32
Female Recurve.....	33

Male Barebow Compound.....	34
Male Barebow Recurve.....	35
Male Compound.....	36
Male Longbow.....	37
Male Recurve.....	38
Risk Management Plan.....	39
By-Law 1: Code of Conduct.....	41

AIM OVER 50 ARCHERY GROUP (INC) – HOW IT ALL BEGAN

It was in 1985 that the Ministry Of Sport And Recreation conducted a Have-A-Go Programme of various sports and recreation. A couple of hours one day a week was set aside for archery. At the end of these sessions, it was suggested that participants, if unable to join an existing club, might consider forming their own club, with advice and if necessary, some assistance from the Ministry. A few were keen to follow on, but none as enthusiastic as May Fitzsimmons.

May discovered that existing clubs were expensive to join and the equipment was more than most elderly people could afford. She then sent out letters to invite all those people who had shown an interest in archery, to a meeting at Alderbury Reserve, Perry Lakes on the 6th October 1985. Six interested people took advantage of the opportunity and joined. They were Mavis Viner (deceased), Marie Carter (retired), Iris Gill (deceased), Bart Buzolic (deceased), Barney Demasson (deceased) and Henk Dob (deceased). So our club was formed there and then on the grass, under the trees where we shot every Monday, until August 2012, and the name A.I.M (Adults In Motion) over 50 Archery Group was adopted. As no-one was interested at that time in taking office, May became President, Secretary and Treasurer.

After a couple of weeks sitting on the grass and discussing ways of obtaining equipment, May went to the Ministry of Sport & Rec, which came to the rescue with 6 tatty old bows and some equally dilapidated arrows, which at the time were thought to be absolutely marvellous. At last we were on our way, with no funds at all when we needed so much, raffles, with each member taking turns in providing the prize, bring and buy stalls, cake stalls etc. All assisted our shooting fees, which were \$1 each attendance and kept as low as possible to encourage older adults to come and "Have A Go."

Eventually, after much effort, May obtained a grant through Graham Edwards, at that time, the Minister for Sport & Recreation. This was on a dollar for dollar basis. Several members each paid May an advance membership of \$100 to enable her to apply for a larger grant, which finally got the club under way.

This increased equipment brought transport problems and an old box trailer belonging to May and her husband Syd, was fitted with a cover and donated to the club, leading to many humorous situations. The back would often fly open and scatter the contents in front of oncoming traffic, and many a time, equipment was lost en route. May applied for, and was granted, an old storm damaged van belonging to the Ministry. This was repaired at Carlisle Tech, repainted at Leederville Tech and became a valued club asset.

Meanwhile social and fund raising activities continued with dances, balls, BBQs, and lessons to instruct children and adults. In fact almost anything that would help bring in a dollar.

Our membership had swelled to 80 by 1987 and during the entire period, May Fitzsimmons, Mavis Viner and Barney Demasson worked tirelessly. No job was too big or small for them. Nothing was too much trouble. Without them, the club would

not exist. May had now been joined by husband Syd, who was also a tower of strength. He became the first equipment officer, personally making all the stands, finger tabs and arm guards, whilst Mavis' son printed the first target faces.

By 1987, membership had grown considerably and another venue was needed. Bayswater was preferred, as it was less distance for May to tow the equipment van. May was successful in obtaining permission to use Halliday Park and shooting commenced there on Thursday 18th May 1989. Attendance at this venue increased rapidly, so May approached the Ministry again with a request to either hire or borrow another van. Jack Bush, then executive director, granted the request and donated another van, which relieved our transport problems considerably. This van was kept at Perry Lakes.

1989 was also notable for some important decisions. At a committee meeting, following a suggestion by Chris Wardle, the club voted to have a newsletter. Our first copy, a one page item, went to print in October 1989. Cyril Bernstein, the club president offered to be the first editor. Chris Wardle accepted the office of Club Recorder and was asked to implement a level system, based on the correct Archery Society levels, which could be used for all future shoots and competitions. This was also done.

Three years later, we poor seniors were still lugging our gear from venue to venue, when we were finally given permission by the council to use one of the rooms at Perry Lakes to store our equipment. Life went on and we were still manhandling our equipment at Bayswater. Eventually, we were fortunate to reach an agreement with the Bayswater Lacrosse Club, which allowed us to rent a small storage room. Hopefully our problems are now over.

Attendance at both venues was reaching near saturation point by the early nineties and a third venue was needed. The Club Secretary at the time, Chris Wardle, wrote to the Lotteries Commission with a brief history of the club and what had been achieved in its short time and what was hoped for in the future. Low and behold! They sent us a cheque for \$5,500 and Willetton was born!

In the following years, there have been many additions to our curriculum. We have a shooting calendar, competitions, medals, level certificates, badges and classification brooches, all with one objective in mind.....to keep the members happy. We are an incorporated club. We are not affiliated with the Archery Society. There are many reasons for our success..... the low fee structure, the camaraderie, the lack of pressure to perform, the warm welcome given to new members, the enthusiasm....., but most of all to a certain core of hard working members who never gave up! So, let's all give thanks to those seven people in 1985, especially May, who had the drive and tenacity to give it a go!

In 1990 May Fitzsimmons was chosen by the Advance Australia Foundation to receive an Advance Australia Award for her services to seniors. She was presented with this at Government House on Friday 25th January 1991 by His Excellency the Governor of Western Australia. Unfortunately May passed away in 2011 and is sadly missed by all who knew her..

In the same year, with the enthusiasm shown by member south of the river, an energetic committee and a cooperative local council, our fourth venue at Thomas Oval in Kwinana was established and continues to flourish.

2012 saw the end of an era with the Perry Lakes venue being vacated for the first time in 27 years primarily as a result of harsh financial conditions being imposed by the Cambridge Council. Without missing a beat and with the more reasonable attitude of the City of Nedlands, the western suburbs operation transferred to a pleasant venue at College Park in Nedlands. Due to the smaller ground size Clout shooting is not possible at this venue.

During 2014 and with ongoing members' enthusiasm, a fifth venue was established at the German Shepherd Dog Association grounds in Southern River. This site not only allows Clout shooting but also, because of adequate lighting, has seen the introduction of shoots held during summer evenings.

Safety Policy & Guidelines

Purpose

The aim of this document is to provide a set of minimum safety standards that allows the sport of Archery to be practiced in a safe and professional manner by AIM Members.

Archery safety is a matter of exercising common sense, good judgment and courtesy.

All members are responsible for their own safety and the safety of others. All members should read, understand and abide by this Safety Policy.

Terms and Definitions

AIM. The AIM Over 50 Archery Group Inc.

Field of Play: The area designated as the venue where archery is practiced it may also be referred to as the range.

Field Course (Not usually used by AIM): A series of targets located throughout a bush land setting that is numbered sequentially starting from target 1.

Member: Any financial member of AIM

Visitor: Any member of the public who visits AIM. Visitors intending to undertake any shooting must be recorded.

Bow: Generic term which refers to any type of archery bow used; Recurve, Compound, Longbow or Bare bow.

Arrow: Refers to a shaft (constructed primarily of wood, fibreglass, carbon, or aluminium), consisting of a nock on one end to attach the shaft, to the string and a metal point on the other end. This covers both bare shafts and fletched shafts.

Release Aid : Any device used (other than the fingers on the hand of the archer) to hold the string and draw the bow and which can then release the string after some type of triggering system is activated.

Target: Name of the piece of equipment comprising of a butt, stand and target face/s.

Target Butt: The part of a target designed to stop and hold the arrows.

Target Faces: The coloured paper attached to the front of a butt.

Clout: Style of shooting where arrows are shot over long distances at a triangular marker on the ground that is known as the Clout. Depending upon equipment, age and gender distances shot are from 100 metres to 180 metres.

General Safety

- AIM Members are strongly encouraged to undertake a regular Risk Analysis of their facilities and activities to identify any potential risks and hazards.
- If there is an identified risk AIM must develop an action plan to manage the identified risk.
- If there is the possibility of uninvited public access onto the venue warning signs and flags must be erected to warn and protect members of the public.
- Shooting must cease immediately if a member of the public or an animal (such as a dog) crosses the shooting range or moves behind the target butts. Shooting may not recommence until all members of the public have reached a safe area
- Be courteous to members of the public at all times.
- AIM's Safety Policy shall be distributed to all members.
- AIM is to develop an evacuation procedure to be followed in the case of an emergency. The Policy to be distributed to all members.
- Members who invite guests to the Club must ensure their guests comply with all safety rules.
- Shooting in residential areas, including your own residential property is discouraged and not recommended. Such shooting is not covered by the AIM Public Liability Insurance policy
- Covered footwear must be worn at all times while engaging in the practice of archery. Sandals or open toed shoes are not permitted while shooting or on the Field of Play.
- Alcohol and drugs must not be consumed by anyone prior to or while shooting. No person may shoot when under the influence of alcohol or drugs.
- Headphones or ear coverings must not be worn while shooting or on the Field of Play, this may prevent an archer hearing any warning signals.
- Armguards, chest protectors and tight-fitting clothes are recommended for personal safety.
- Bows must never be drawn back with an arrow fitted unless the bow is pointed toward the targets and the field of play is clear of archers and officials.
- The practice of drawing a bow or adopting a shooting technique that allows the bow to be drawn back and raised higher than the top of a target butt is considered to be unsafe and must not be used.
- Never aim a bow, loaded or otherwise, at another person.
- Never run on the Field of Play -walking pace only particularly while carrying arrows.
- When crossing the Field of Play always walk behind all archers on the shooting line. Do not ask a fellow archer to cease shooting so you may cross in front.

- Be careful not to disturb neighbouring archers when shooting or leaving the shooting line.
- Avoid poking other archers with bow limbs or stabilisers.
- Archers must regularly check and maintain their equipment. Inspect for cracked limbs and risers, damaged arrows, frayed strings and damaged nocks. It is the archer's responsibility to ensure their equipment is safe to be used.
- Always use matched arrows.
- Never dry fire a bow (i.e. firing a bow without an arrow attached to the string).
- All shooting is to be under the control of a Range Captain or suitably qualified and experienced club official.
- All organised shooting should be controlled by whistle signals
 - One Blasts: Commence shooting
 - Two Blasts: Stop shooting, retrieve & score arrows
 - 3 or more Blasts: Danger, stop shooting immediately.
- Never move forward to collect your arrows before directed to by the Range Captain or suitably qualified and experienced club official.
- When approaching a target, look for arrows that may be lodged in the ground.
- Approach the target from the sides to avoid arrows lodged in the ground or in the target
- When pulling arrows from the target, ensure there is no one standing in front of the arrows and always pull arrows out while standing to the side of the butt
- A maximum of two archers are to remove the arrows at a time, one from each side (one person removes from the left side, one from the right). Always use the method of withdrawing arrows from the target by the prescribed method.
- Never pull an arrow from the target butt toward your face.
- Always use two hands when drawing arrows from the target and always use the prescribed method.
- When shooting Barebow it is strongly recommended that an arrow must not be drawn above the cheekbone, this is a potential eye hazard particularly with a miss-shot arrow.
- When shooting on a field course and you are looking for a missed arrow, one archer must remain in front of the target. This will warn following archers that the field target is still in use. This applies in both practice and competition.
- At no time shall a person cause any interference to an archer or their equipment whilst they are shooting.
- AIM shall have a well-stocked and maintained First Aid Kit available at each shooting site. The kit must also include
 - Attendance Book
 - Sun Screen
 - Water or Drink Supply
 - Emergency Contact List

- Safety Policy

Personal Equipment Safety

Arrows

- Arrows should be inspected for damage regularly, preferably after each end, particularly carbon arrows.
- Arrows should be matched being the same type, size, and length, fitted with the same points, nocks and fletches (vanes).
- Only arrows designed for target or field shooting must be used. Hunting arrows must never be used at an AIM shooting site.

Recurve Bow

- The bow must be inspected each time you shoot for damage, such as cracks or faults.
- The bow should be strung only in an approved and safe manner.
- The bowstring should be checked for damage, wear, or faults prior to shooting.
- Arrow rests should be checked for damage or wear prior to shooting.

Compound Bow

- The bow must be inspected daily for damage, cracks or faults.
- The bowstring and cables should be checked for damage, wear or faults prior to shooting.
- Arrow rests and accessories should be checked for damage, wear or faults prior to shooting.
- An experienced and trained person should only carry out maintenance on a compound bow using appropriate equipment.

Release Devices

- Release devices must be of sound design, inspected regularly and in good working order.
- If the release aid uses a rope to hold the string or a loop attached to the string, the rope or loop must be inspected by the archer prior to commencing and on a regular basis and changed when any signs of excessive wear are found

Target Practice

- Target ranges shall be setup with a permanent shooting line and staggered targets with archers shooting and moving forward to score together.
- Target butts are fitted with wheels and will be moved en masse towards the shooting line.

Field of Play Layout

Target Field of Play

- There must be a cleared area of not less than 50 metres behind the longest target. This area should be flagged or sign posted or both to prevent vehicle or pedestrian access.
- There should be a clear zone of not less than 25 metres either side of the Field of play. This area should be suitably flagged and sign posted.
- Ideally to prevent archers having the sun in their eyes causing a hazard, where possible, all shooting should be toward the south.

Tournaments

Target and Clout Shoots

- Target shoots must be held under the direction and supervision of the Range Captain.
- All shoots must be controlled using a sound or whistle signal.
- Archers must only remove an arrow from their quiver and load the arrow on the bow when on the shooting line.
- If an arrow falls forward of the shooting line, the archer must wait until all shooting has finished to retrieve an arrow.
- When archers have completed shooting their end, they must step back from the shooting line (behind the waiting line if provided) so that the Range Captain has an unobstructed view.
- If a Waiting Line is not provided archers should step back a minimum of 5 metres behind the Shooting Line when completed shooting
- When shooting Clout, care should be taken when approaching the Clout. Look for arrows that have fallen short. Non-scoring arrows should be stood up and stuck in the ground by the first person encountering them.
- If a staggered shooting line is being used in Clout, ensure a safe distance is allowed between the multiple clout shooting lines.

Adverse Weather Conditions

This policy will identify the course of action that must be taken in the case of excessive, inclement or dangerous weather conditions or an emergency. These weather conditions could include – heat, rain, wind, hail and lightning.

As archery is largely an outdoor sport, care must be taken and appropriate action undertaken to ensure the safety of competitors, officials and spectators in extreme weather conditions.

Heat

In extreme heat conditions it is strongly recommended that shooting be discontinued.

Archery being an “outdoor” sport the risk of heat exposure is ever present. Archers are responsible for their own safety and should take appropriate precautions such as wearing appropriate clothing, hats and long sleeve shirts, use sun screen and drink water on a regular basis.

During shoots archers spend the majority of the time on the field of play moving to and from the targets and scoring, extra care should be considered such as the use of umbrellas

Rain

Archers are well known for their ability to “soldier on” in rain and wet conditions. Generally it is commonly accepted that rain should not cause a cancellation or postponement but the Range Captain should consider the general safety of competitors, officials and spectators.

Consideration should be given to slip and trip hazards, damage to personal and tournament equipment. In cold and wet conditions consideration should also be given to hypothermia.

Wind

As archery is generally an outdoor sport, wind is ever present and generally an unavoidable part of archery.

Strong gusty winds create hazards in archery, such as blowing arrows from arrows rests, blowing over telescopes, umbrellas, tents, target butts and causing objects to become air borne.

Air borne objects create a major hazard with people being struck. As a general rule when wind gusts reach unsafe levels the shoot will be discontinued.

Hail

Although not common, hailstorms do present a potential risk for serious injury. In many cases hailstorms arrive without warning, although generally accompanied by dark storm clouds.

Archers, officials and spectators should be immediately evacuated to a sheltered area until the storm has passed.

Lightning

Lightning poses a major risk, in the first sign of lightning even in the distance all shooting should immediately cease and the Field of Play should be evacuated until the threat has passed. No attempt should be made to retrieve targets until danger has passed.

First Aid

A First Aid Kit will always be available and for events and a trained and certified First Aid provider where possible, will be in attendance.

A list of emergency numbers and a telephone should be readily available.

Working Bees and Club Maintenance

- All shooting should be stopped during working bees and club maintenance.
- When general maintenance is being undertaken, shooting will take place at the discretion of the Range Captain or suitably trained and experienced Club Official.
- When using line markers and other similar equipment only experienced and authorised persons should operate this equipment.
- While using electrical or other power equipment during working bees and general maintenance, those using the equipment are responsible for their personal safety and the safety of those in proximity to the work being undertaken.
- Power tools and electrical equipment must be checked regularly to ensure they are in safe working order.

Membership

Membership is open to both ladies and gentlemen.

Any person who wishes to become a member of the AIM Archery Group must have attained the minimum age requirement of 50 years.

Membership:

All Members are classed as Group Members paying an annual membership fee, however those members who elect on an annual basis to shoot, pay an additional range fee to cover ground hire and equipment costs.

Annual fees are set each year at the Annual General Meeting of members.

New members joining after 1st May and before 1st August pay 50% of set range fees, those joining after 1st August pay 25% of set range fees, however, irrespective of joining date, set membership fees are payable.

Members are covered by the group public liability insurance policy whilst participating in AIM group archery activities anywhere in Australia.

Membership entitlements:

Attendance at any or all shooting venues

- Mondays at College Park, Nedlands or GSDA venue, Southern River
- Tuesdays at Willetton Reserve, Willetton
- Wednesdays at Thomas Oval, Kwinana
- Thursdays at Halliday Park, Bayswater.

Membership expectations:

Members will arrive in sufficient time to assist in setting up the shooting field prior to the shoot start time. They shall not leave until all group equipment has been stored correctly.

The maintenance of group equipment is carried out by the members. All group members are expected to do their share under the guidance of the Equipment Officer.

A reasonable contribution in this area is a requirement of all members.

Start times are generally 8:30 am at all venues. Times may be varied separately with agreement of members attending each venue.

Set up time is approximately 1hr prior to the start of shooting, or as varied by members at each relevant venue.

Basic instruction and limited club equipment is available at all venues.

Rules for Visitors

Visitors are most welcome to attend any of the AIM archery shoots.

Visitors may be of any age however they are not entitled to join AIM until they have attained the age of 50 years.

They may attend as a visitor for a total of three times only. The first attendance is free, the next two visits will be charged at \$10 per visit.

All visitors must successfully complete induction training under the guidance of an approved Group Instructor. This is to be completed before any visitor is allowed to shoot.

Only low poundage bows (less than 56#) are to be used and must be approved by a Group Instructor. In most cases, visitors will use group owned equipment.

Members' (adult) relatives will be treated as an outside visitor with a total of three visits only.

Visitors are not entitled to shoot on any Competition day.

All visitors (except qualified archers) must only shoot three arrows each end to avoid holding up the shooting line.

All visitors other than qualified archers must at all times be supervised. Members must supervise their visiting relatives.

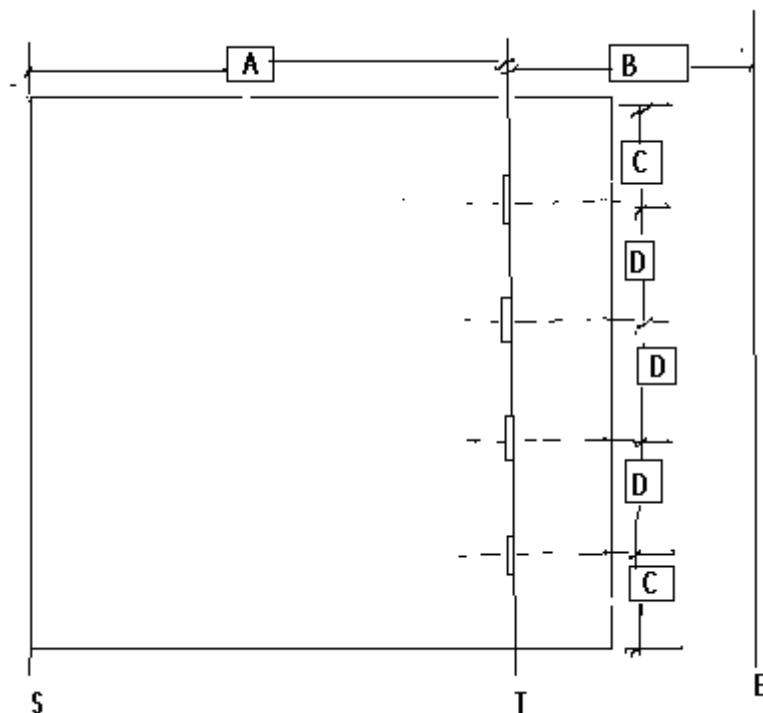
All other visitors must be supervised by a Group Instructor.

Participating visitors and members' relatives are covered by the group public liability insurance policy.

Archery Shooting Field

The Target shoot field:

The diagram below shows the shooting field layout (excluding Clout) for the shoots available to AIM archery participants.



Where **S** is the shooting line, **T** is the line of targets, **B** is the safety distance behind targets to the end of field for flag line (minimum of 50m), **C** is the safety distance from targets to edge of the side flag line (minimum of 20m) and **D** is the centre distance between individual targets.

For AIM shoots, the following configurations are used:

A	B	C	D
20m	50m	25m	5m
25m	50m	25m	5m
30m	50m	25m	5m
40m	50m	25m	5m
50m	50m	25m	5m
60m	50m	25m	5m

The Clout Shoot Field

Where "X" represents the location of the Clout target.

A –Gents barebow recurve, Gents longbow, Ladies compound distance -- 145 metres

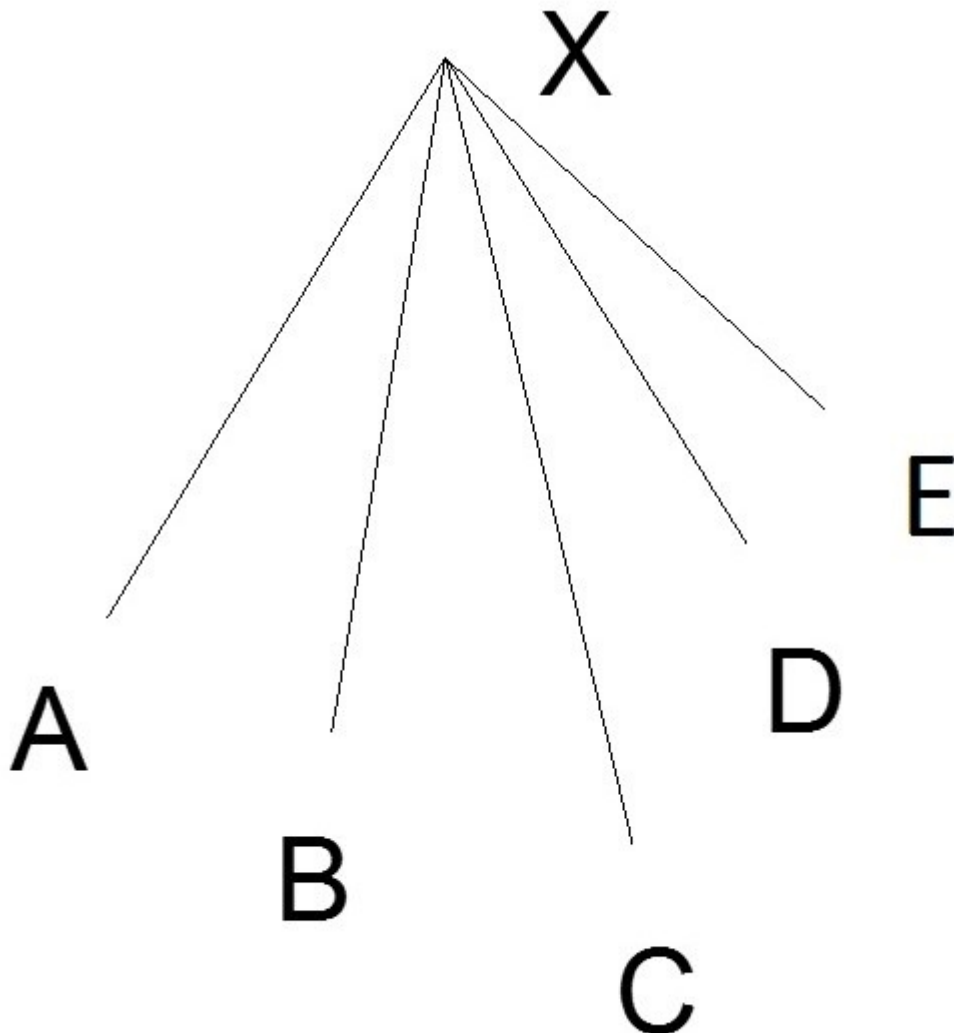
B - Gents recurve, Gents barebow compound distance -- 165 metres

C - Gents Compound distance -- 180 metres

D - Ladies recurve, Ladies barebow compound distance -- 125 metres

E - Ladies longbow, Ladies barebow recurve distance -- 100 metres

Shooting positions shall be sufficiently far apart to guarantee safety for all archers



The AIM Archery System of Shooting Levels

The system of shooting levels or “levels” as they are commonly referred to is best compared to the “handicap” of a golfer. The level basically is the performance level (measured as a score) that an archer can be expected to achieve on an ongoing basis.

AIM Archery Club recognizes five basic forms of archery bow:

Longbow

Barebow Recurve

Barebow Compound

Recurve

Compound

(The use of cross bows is forbidden)

Charts exist and are available to archers for each gender and designated type of shoot (i.e. size of target and the shooting distance) with the score required to achieve the various nominated performance levels. Ten separate charts are available. These charts are included in this Handbook and are identical except for the nominated scores.

There are fourteen levels recognized in the AIM Archery Club with the highest, level fourteen, being that of the Grand Master Bowman.

A new archer will begin shooting without an established performance level.

The archer’s performance level can be affected by the results of any recognized AIM shoot at any of the five venues.

The method of assessing an archers “Level” is a granular system that keeps track of the different bow types used. Archers shooting scores are recorded and then used to calculate a level average for the bow types used.

In this way, archers will develop different shooting levels for each of the bow types used over a given period.

The archer’s performance level will be a consideration in the type of shoot and the shooting distance in Club Championships.

Rules Governing Trophy Competition Shoots

Preamble

These are the Rules governing the conduct of the trophy competition shoots of AIM Over 50 Archery Group INC (the Group).

All financial members that pay shooting fees are entitled to shoot in all competitions; however no trophy will be awarded to any member who has not held membership for at least 3 months to allow sufficient time to establish their level. The trophy will be awarded to the next best qualified archer.

The Range Captain is in control of all range activities and his/her instruction must be followed without question.

Should an archer have a grievance on any matter, that archer may refer it to the Range Captain and has the further right to refer it to the President and/or the Committee for adjudication.

Should the outcome of such adjudication result in an effect on the score of any archer then the score recorded against the name of that archer will be amended.

The Committee of the Group shall have the authority to amend these Rules. Any interpretation of these Rules by any person shall be on the basis of the intent of, and in the interests of the members of the Group and always in the long term development and furtherance of the objects and interests of the Group.

General Rules Applicable to all Shoots, other than Clout and Ray Warman Consistency Trophy

- (a) All competition shoots, other than Clout, shall comprise three rounds of five ends, each with each end being of six arrows, giving a total of 90 scoring arrows.
- (b) There shall be two practice ends prior to commencement of the first round of competition.
 - If a break is taken at any time (usually at the end of the second round), then one warm up, non-scoring end shall be permitted prior to re commencement of the competition shoot.
 - Should no break be taken, then no practice end shall be permitted.
 - In shoots where a target shift is involved, a sighting non-scoring end is allowed after the target shift has taken place.
- (c) Only the first shoot nominated by an archer will apply for that archer. The archer cannot shoot on a subsequent day at a different venue once a scoresheet has been opened in his/her name at the first nominated venue unless paragraph (d) applies to the Shoot.

- (d) Should that nominated Shoot be rained off or deferred for any reason whatsoever, then that particular venue may hold the particular Shoot in the next following week and if deferred further, to be decided by the Committee.
- In a rained off or deferred situation, nothing will prevent an archer from attending another venue on any other recognised day and nominating that shoot as his/her first shoot.
 - There is no longer a total cancellation unless all venues are closed in that week.
- (e) Should there be only one participant in any category, then that archer, on completion of the particular shoot, would be awarded the relevant trophy for that category, provided that the archer has achieved his/her level of score.
- There must be another member acting as scorer.
 - Other than for the Championship Shoot, if that level has not been achieved by that single participant then no award will be made.
- (f) Gear failure during competition, with the archer retiring from the competition on that day, shall not constitute a valid reason for that archer attending an alternative venue and attempting to re-shoot or complete the shoot in that competition.
- Should an archer lose any ends through taking time to repair equipment, then those lost ends shall be forfeited and the archer cannot make up those ends through an extension of time or otherwise.
- (g) If an arrow falls out or rebounds from the target during a major competition and falls to the front of the target, the shot can be taken again in the next end.
- Rebound arrows shot during normal weekly shoots and falling to the front of the target, will be scored as 7.
 - If an arrow "Robin Hoods" another arrow, then the value of the score is the value attached to the arrow which has been hit.
 - If an arrow glances off another arrow which is already in the target, then where that shot arrow penetrates the target is the score to be recorded.
- (h) Should an arrow be shot off the target, the Range Captain shall permit a maximum of two minutes for the searching of arrows.
- This time shall be measured from the point when, in the Range Captain's opinion, the majority of the archers have pulled their arrows from the target face and are returning to the firing line.
 - Searching for lost arrows must not unduly delay the shoot. Such arrows shall be sought after shooting has finished at the end of the competition.
 - One person must stay in front of the target while others are searching for lost arrows.

The May Fitzsimmons Championship Shoot

The May Fitzsimmons Championship Shoot may be shot at any venue on the recognised shooting day for that selected venue, on the date nominated by the Committee and specified in the Information Booklet & Shooting Calendar.

- Archers shall shoot at different distances according to their type of bow and gender.
 - Ladies
 - Longbow – 30 metres
 - Barebow Recurve – 30 metres
 - Recurve – 40 metres
 - Compound – 50 metres
 - Gents
 - Longbow – 40 metres
 - Barebow Recurve – 40 metres
 - Recurve – 50 metres
 - Compound – 60 metres
- Target face size shall be 122cm.
- Trophies shall be awarded to Ladies and Gents in each of Longbow, Barebow Recurve, Recurve and Compound categories and shall be awarded to the archers with the highest score in each of the specified categories.
- First, second and third places shall be awarded provided there are sufficient archers to award that number of places.

Controlled Level Shoots

Controlled Level Shoots, being the Lyn Callaghan Shoot and The Savvides Shoot may be shot at any venue on the recognised shooting day for that selected venue as specified in the Information Booklet & Shooting Calendar.

- All archers will shoot at a distance according to their level.
 - Level 9 and below – 30 metres
 - Level 10 – 40 metres
 - Level 11 – 50 metres
 - Level 12 and above – 60 metres
- Target face size shall be 122cm.
- Trophies are awarded to the Ladies and Gents in each of the Recurve and Compound categories, who exceed their required level score by the greatest amount, no distinction being made for Longbow or Barebow both of which shall be deemed to fall within the definition of Recurve for the purposes of these Shoots. There will be a Perpetual Trophy awarded, the ownership of

which remains with the group but is presented to the winner and held in trust by that archer until called upon to return it to the group. A smaller trophy is also awarded to the winner as a personal memento of that achievement.

- First place only shall be awarded in the categories of Ladies and Gents.

The Level Shoot

The Level Shoot may be shot at any venue on the recognised shooting day for that selected venue as specified in the Information Booklet & Shooting Calendar.

- All archers will shoot at a distance according to their.
 - Level 9 and below – 30 metres
 - Level 10 – 40 metres
 - Level 11 – 50 metres
 - Level 12 and above – 60 metres
- Target face size shall be 122cm.
- Trophies are awarded to the Ladies and Gents in each of the Recurve and Compound categories and within each of the recognised levels, who exceed their required level score by the greatest amount, no distinction being made for Longbow or Barebow both of which shall be deemed to fall within the definition of Recurve for the purposes of these Shoots.
- First, second and third places shall be awarded provided there are sufficient archers to award that number of places.

Handicap Shoot

The Handicap Shoot may be shot at any venue on the recognised shooting day for that selected venue as specified in the Information Booklet & Shooting Calendar.

- All archers shoot at 40 metres and the score standards at that distance per the published level achievements will apply to the archer according to his/her stated level.
- Target face size shall be 122cm.
- Trophies are awarded to the Ladies and Gents in each of the Recurve and Compound categories, who exceed their required level score by the greatest amount, no distinction being made for Longbow or Barebow both of which shall be deemed to fall within the definition of Recurve for the purposes of these Shoots.
- First, second and third places shall be awarded provided there are sufficient archers to award that number of places.

The Ray Warman Consistency Trophy

- Archers may shoot at any venue on a recognised shooting day for that selected venue as specified in the Shooting Calendar.
- Only the first shoot nominated within that week by an archer will apply for that archer. The archer cannot shoot on a subsequent day at a different venue once a scoresheet has been opened in his/her name at the first nominated venue unless rained off or cancelled applies to the Shoot.
 - In any week where there is a choice for members to shoot Standard target (or any other recognised shoot), and Clout, for the purposes of achieving a point for the Ray Warman Consistency Trophy, it is the first shoot of that week which counts.
 - If an archer shoots both in one week, only the first shoot will count, the second shoot being deemed to be a personal, pleasure shoot.
- Should that nominated Shoot be rained off or cancelled for any reason whatsoever, then that shall have no effect on other archers at other venues during that same week
 - In a rained off or cancelled situation, nothing will prevent an archer from attending another venue on any other recognised day and nominating that shoot as his/her first shoot for that particular shoot.
 - There is no longer a total cancellation unless all venues are closed in that week.
- Archers of Level 10 and above shall shoot the “shoot of the day” as specified in the Shooting Calendar, but where the Shooting Calendar specifies a “Standard” shoot, the archer is free to shoot any of the listed shoots as specified in the Members Handbook.
- Archers of Level 9 and below may shoot at any distance at any time but must achieve their respective level in order to be awarded a point as detailed below.
- A point is awarded each week where an archer achieves a score equal to or greater than the standard for the level of that archer at that particular shoot, including where the shoot on a recognised day falls on a public holiday.
- Points achieved each week for each archer are accumulated to give an annual individual total, irrespective of the venues at which these points have been achieved.

- Trophies are awarded on an annual basis to the archers who have achieved the highest points.
 - First place only shall be awarded in the categories of Ladies and Gents.
 - Should there be only one participant in any category, then on completion of the annual totals that archer would be awarded the relevant trophy. At all times during the year there must be another member acting as scorer.

Clout

- Archers shoot over different distances, with categories for Ladies and Gents, and according to the type of bow used, Recurve, Barebow, Compound or Longbow.
- Distinction is made between using sights or barebow and is specified on the attached chart.
- Of the current venues used by the group, Clout can only be shot at Kwinana venue on the dates specified in the Information Booklet & Shooting Calendar. The Committee may arrange a clout shoot at any other appropriate location at its discretion.
- Levels have been defined for Clout in all categories and consequently any results will count towards the Ray Warman Consistency Trophy.
- Clout Championship shoots will be held at both of the above venues on the dates specified in the Information Booklet & Shooting Calendar but only the first shoot nominated by an archer will apply to that archer.
- An archer cannot shoot on a subsequent day at a different venue once a score sheet has been opened in his/her name at the first nominated venue unless paragraph (f) applies to the Shoot.
- Should that nominated Shoot be rained off or deferred for any reason whatsoever, then that particular venue may hold the particular Shoot in the next following week and if deferred further, the Committee will decide.
- The Clout shoot shall comprise two rounds of 5 ends each, with each end being of six arrows, giving a total of 60 scoring arrows.
- There will be one practice end prior to the commencement of the first round of competition.
- A break can be taken at any time, at the Clout Range Captain's discretion but no practice end is permitted on recommencement of shooting.

- The Target is 15 metres in diameter with spacing between the Clout and each of the coloured flags at 1.5metres.
 - The flag colour sequence matches that of normal targets, viz:
Gold Red Blue Black White
 - Scoring shall be on numbered section like a normal target face:
 - Gold =10 and 9, Red = 8 and 7, Blue = 6 and 5, Black = 4 and 3, White = 2 and 1.
 - If the arrow hits the clout, the score remains at 10.
 - Refer to the Chart attached for score levels in each category.
- Trophies will be awarded to the archer in each category who achieves the highest score in each of the specified categories.
- First, second and third places shall be awarded provided there are sufficient archers to award that number of places.
- Should there be only one participant in any category, then on completion of the shoot that archer would be awarded the relevant trophy. If that level is not achieved by that single participant then no award shall be made.
- At all times during the year, there must be another member acting as scorer.

AIM Archery Weekly Competition Shoots

Definitions

End: The release of six arrows after which the arrows are retrieved from the target.

Round: The completion of five ends each of six arrows.

Shoots: Shoots are the same for ladies and gents shooting, recurve, barebow, longbow or compound bows.

All shoots (except clout) consist of three scored rounds, usually with a break between the second and third round. Two sighting ends are shot prior to the first round and one sighting end prior to the third round. This enables the archer to adjust the bow sight as required.

Targets:

Targets used are of three sizes, 122cm diameter, 80cm diameter and 60cm diameter.

AIM Recognised Shoots:

The normal target shoots offered by AIM Archery are:

Floreat: 3 rounds 122cm target 20 metres.

Bayswater: 3 rounds 60cm target 25 metres.

Wembley: 3 rounds 122cm target 30 metres.

Willetton: 3 rounds 80cm target 40 metres.

Melville: 3 rounds 122cm target 40 metres.

Bedford: 3 rounds 122cm target 50 metres.

Scarboro: 3 rounds 122cm target 60 metres,

Beechboro: 3 rounds, one at 50 metres, one at 40 metres and one at 30 metres, all shot at a 80cm target.

Short Beechboro: 3 rounds, one at 40 metres, one at 30 metres and one at 20 metres, all shot at a 80cm target.

Canberra: 3 rounds, one at 60 meters, one at 50 metres and one at 40 metres, all shot at a 122cm target.

Short Canberra: 3 rounds, one at 50 metres, one at 40 metres and one at 30 metres, all shot at a 122 cm target.

Junior Canberra: 3 rounds, one at 40 metres, one at 30 metres and one at 20 metres, all shot at a 122cm target.

Clout: 2 rounds shot at a horizontal ground marked target from 180 metres (Gents Compound distance, 165 metres (Gents recurve, Gents barebow compound distance), 145 metres (Gents barebow recurve, Gents longbow, Ladies compound distance, 125 metres (Ladies recurve, Ladies barebow compound distance, 100 metres (Ladies longbow, Ladies barebow recurve distance)

Rebounding arrows:

AIM has adopted the following policy with respect to rebounding arrows:

- A member having an arrow rebound from the front of the target during a shoot may claim a score of 7 for that arrow.
- If a rebound happens during any of the Competition shoots, that arrow must be shot again.

Lost arrows:

A maximum search time of two minutes per instance will be allowed by the Range Captain for an archer to locate a lost arrow. The Group accepted practice is for other archers to join the search and hence reduce time wasted. One archer must remain at the target face so the Range Captain can see there are archers still on the field.

Level Charts

Female Barebow Compound

Female Barebow Compound														
	Level 1	Level 2	Level 3	Level 4	Level 5	Level 6	Level 7	Level 8	Level 9	Level 10	Level 11	Level 12	Level 13	Level 14
Floreat	582	590	598	606	614	622	663	699	758	803	837	851	863	874
Bayswater	183	194	205	216	227	238	291	346	466	576	664	700	732	760
Wembley	388	400	412	424	436	448	506	560	651	721	775	797	816	833
Willetton	127	134	141	148	155	162	201	247	357	475	583	630	670	705
Melville	251	262	273	284	295	306	363	423	537	633	708	738	765	788
Bedford	163	172	181	190	199	208	256	309	426	540	636	675	710	740
Scarboro	109	116	123	130	137	144	181	224	329	447	558	607	650	688
Beechboro	138	146	154	162	170	178	218	264	369	480	582	628	668	703
ShortBeechboro	247	257	267	277	287	297	347	400	506	603	683	717	746	772
Canberra	174	183	192	201	210	219	266	319	431	540	634	673	709	739
ShortCanberra	255	276	287	298	309	320	375	431	538	631	706	737	764	788
JuniorCanberra	403	414	425	436	447	458	511	561	649	719	773	796	815	832

Female Barebow Recurve

Female Barebow Recurve														
	Level 1	Level 2	Level 3	Level 4	Level 5	Level 6	Level 7	Level 8	Level 9	Level 10	Level 11	Level 12	Level 13	Level 14
Floreat	550	558	566	574	582	590	622	663	730	782	821	837	851	863
Bayswater	139	150	161	172	183	194	238	291	406	523	622	664	700	732
Wembley	340	352	364	376	388	400	448	506	608	689	750	775	797	816
Willetton	109	116	113	120	127	134	162	201	300	417	532	583	630	670
Melville	207	218	229	240	251	262	306	363	481	588	673	708	738	765
Bedford	127	136	145	154	163	172	208	256	366	484	591	636	675	710
Scarboro	81	88	95	102	109	116	144	181	274	387	504	558	607	650
Beechboro	106	114	122	130	138	146	178	218	315	425	533	582	628	668
ShortBeechboro	207	217	227	237	247	257	297	347	453	556	645	683	717	746
Canberra	138	147	156	165	174	183	219	266	373	486	589	634	673	709
ShortCanberra	211	222	233	244	255	276	320	375	485	587	671	706	737	764
JuniorCanberra	359	370	381	392	403	414	458	511	606	687	748	773	796	815

Female Compound

	Female Compound													
	Level 1	Level 2	Level 3	Level 4	Level 5	Level 6	Level 7	Level 8	Level 9	Level 10	Level 11	Level 12	Level 13	Level 14
Floreat	590	598	606	614	622	663	730	782	821	851	874	890	895	898
Bayswater	194	205	216	227	238	291	406	523	622	700	760	805	823	840
Wembley	400	412	424	436	448	506	608	689	750	797	833	860	871	880
Willetton	134	141	148	155	162	201	300	417	532	630	705	763	787	807
Melville	262	273	284	295	306	363	481	588	673	738	788	826	841	855
Bedford	172	181	190	199	208	256	366	484	591	675	740	789	809	827
Scarboro	116	123	130	137	144	181	274	387	504	607	688	749	775	796
Beechboro	146	154	162	170	178	218	315	425	533	628	703	762	786	806
ShortBeechboro	257	267	277	287	297	347	453	556	645	717	772	814	831	845
Canberra	183	192	201	210	219	266	373	486	589	673	739	788	808	826
ShortCanberra	276	287	298	309	320	375	485	587	671	737	788	825	840	854
JuniorCanberra	414	425	436	447	458	511	606	687	748	796	832	859	868	877

Female Longbow

	Female Longbow													
	Level 1	Level 2	Level 3	Level 4	Level 5	Level 6	Level 7	Level 8	Level 9	Level 10	Level 11	Level 12	Level 13	Level 14
Floreat	566	574	582	590	598	606	614	622	663	730	782	803	821	837
Bayswater	161	172	183	194	205	216	227	238	291	406	523	576	622	664
Wembley	364	376	388	400	412	424	436	448	506	608	689	721	750	775
Willetton	113	120	127	134	141	148	155	162	201	300	417	475	532	583
Melville	229	240	251	262	273	284	295	306	363	481	588	633	673	708
Bedford	145	154	163	172	181	190	199	208	256	366	484	540	591	636
Scarboro	95	102	109	116	123	130	137	144	181	274	387	447	504	558
Beechboro	122	130	138	146	154	162	170	178	218	315	425	480	533	582
ShortBeechboro	227	237	247	257	267	277	287	297	347	453	556	603	645	683
Canberra	156	165	174	183	192	201	210	219	266	373	486	540	589	634
ShortCanberra	233	244	255	276	287	298	309	320	375	485	587	631	671	706
JuniorCanberra	381	392	403	414	425	436	447	458	511	606	687	719	748	773

Female Recurve

	Female Recurve													
	Level 1	Level 2	Level 3	Level 4	Level 5	Level 6	Level 7	Level 8	Level 9	Level 10	Level 11	Level 12	Level 13	Level 14
Floreat	558	566	574	582	590	622	663	730	782	821	851	874	882	890
Bayswater	150	161	172	183	194	238	291	406	523	622	700	760	784	805
Wembley	352	364	376	388	400	448	506	608	689	750	797	833	847	860
Willetton	116	113	120	127	134	162	201	300	417	532	630	705	736	763
Melville	218	229	240	251	262	306	363	481	588	673	738	788	808	826
Bedford	136	145	154	163	172	208	256	366	484	591	675	740	766	789
Scarboro	88	95	102	109	116	144	181	274	387	504	607	688	721	749
Beechboro	114	122	130	138	146	178	218	315	425	533	628	703	735	762
ShortBeechboro	217	227	237	247	257	297	347	453	556	645	717	772	794	814
Canberra	147	156	165	174	183	219	266	373	486	589	673	739	764	788
ShortCanberra	222	233	244	255	276	320	375	485	587	671	737	788	806	825
JuniorCanberra	370	381	392	403	414	458	511	606	687	748	796	832	845	859

Male Barebow Compound

	Male Barebow Compound													
	Level 1	Level 2	Level 3	Level 4	Level 5	Level 6	Level 7	Level 8	Level 9	Level 10	Level 11	Level 12	Level 13	Level 14
Floreat	590	598	606	614	622	663	699	730	782	821	851	863	874	882
Bayswater	194	205	216	227	238	291	346	406	523	622	700	732	760	784
Wembley	400	412	424	436	448	506	560	608	689	750	797	816	833	847
Willetton	134	141	148	155	162	201	247	300	417	532	630	670	705	736
Melville	262	273	284	295	306	363	423	481	588	673	738	765	788	808
Bedford	172	181	190	199	208	256	309	366	484	591	675	710	740	766
Scarboro	116	123	130	137	144	181	224	274	387	504	607	650	688	721
Beechboro	146	154	162	170	178	218	264	315	425	533	628	668	703	735
ShortBeechboro	257	267	277	287	297	347	400	453	556	645	717	746	772	794
Canberra	183	192	201	210	219	266	319	373	486	589	673	709	739	764
ShortCanberra	276	287	298	309	320	375	431	485	587	671	737	764	788	806
JuniorCanberra	414	425	436	447	458	511	561	606	687	748	796	815	832	845

Male Barebow Recurve

	Male Barebow Recurve													
	Level 1	Level 2	Level 3	Level 4	Level 5	Level 6	Level 7	Level 8	Level 9	Level 10	Level 11	Level 12	Level 13	Level 14
Floreat	550	558	566	574	582	590	622	699	758	803	837	851	863	874
Bayswater	139	150	161	172	183	194	238	346	466	576	664	700	732	760
Wembley	340	352	364	376	388	400	448	560	651	721	775	797	816	833
Willetton	109	116	113	120	127	134	162	247	357	475	583	630	670	705
Melville	207	218	229	240	251	262	306	423	537	633	708	738	765	788
Bedford	127	136	145	154	163	172	208	309	426	540	636	675	710	740
Scarboro	81	88	95	102	109	116	144	224	329	447	558	607	650	688
Beechboro	106	114	122	130	138	146	178	264	369	480	582	628	668	703
ShortBeechboro	207	217	227	237	247	257	297	400	506	603	683	717	746	772
Canberra	138	147	156	165	174	183	219	319	431	540	634	673	709	739
ShortCanberra	211	222	233	244	255	276	320	431	538	631	706	737	764	788
JuniorCanberra	359	370	381	392	403	414	458	561	649	719	773	796	815	832

Male Compound

	Male Compound													
	Level 1	Level 2	Level 3	Level 4	Level 5	Level 6	Level 7	Level 8	Level 9	Level 10	Level 11	Level 12	Level 13	Level 14
Floreat	590	598	606	614	622	663	730	782	821	851	874	890	898	900
Bayswater	194	205	216	227	238	291	406	523	622	700	760	805	840	853
Wembley	400	412	424	436	448	506	608	689	750	797	833	860	880	888
Willetton	134	141	148	155	162	201	300	417	532	630	705	763	807	825
Melville	262	273	284	295	306	363	481	588	673	738	788	826	855	866
Bedford	172	181	190	199	208	256	366	484	591	675	740	789	827	842
Scarboro	116	123	130	137	144	181	274	387	504	607	688	749	796	816
Beechboro	146	154	162	170	178	218	315	425	533	628	703	762	806	824
ShortBeechboro	257	267	277	287	297	347	453	556	645	717	772	814	845	858
Canberra	183	192	201	210	219	266	373	486	589	673	739	788	826	842
ShortCanberra	276	287	298	309	320	375	485	587	671	737	788	825	854	866
JuniorCanberra	414	425	436	447	458	511	606	687	748	796	832	859	877	885

Male Longbow

	Male Longbow													
	Level 1	Level 2	Level 3	Level 4	Level 5	Level 6	Level 7	Level 8	Level 9	Level 10	Level 11	Level 12	Level 13	Level 14
Floreat	566	574	582	590	598	606	614	622	699	758	803	821	837	851
Bayswater	161	172	183	194	205	216	227	238	346	466	576	622	664	700
Wembley	364	376	388	400	412	424	436	448	560	651	721	750	775	797
Willetton	113	120	127	134	141	148	155	162	247	357	475	532	583	630
Melville	229	240	251	262	273	284	295	306	423	537	633	673	708	738
Bedford	145	154	163	172	181	190	199	208	309	426	540	591	636	675
Scarboro	95	102	109	116	123	130	137	144	224	329	447	504	558	607
Beechboro	122	130	138	146	154	162	170	178	264	369	480	533	582	628
ShortBeechboro	227	237	247	257	267	277	287	297	400	506	603	645	683	717
Canberra	156	165	174	183	192	201	210	219	319	431	540	589	634	673
ShortCanberra	233	244	255	276	287	298	309	320	431	538	631	671	706	737
JuniorCanberra	381	392	403	414	425	436	447	458	561	649	719	748	773	796

Male Recurve

Male Recurve														
	Level 1	Level 2	Level 3	Level 4	Level 5	Level 6	Level 7	Level 8	Level 9	Level 10	Level 11	Level 12	Level 13	Level 14
Floreat	582	590	598	606	614	622	699	758	803	837	863	882	890	895
Bayswater	183	194	205	216	227	238	346	466	576	664	732	784	805	823
Wembley	388	400	412	424	436	448	560	651	721	775	816	847	860	871
Willetton	127	134	141	148	155	162	247	357	475	583	670	736	763	787
Melville	251	262	273	284	295	306	423	537	633	708	765	808	826	841
Bedford	163	172	181	190	199	208	309	426	540	636	710	766	789	809
Scarboro	109	116	123	130	137	144	224	329	447	558	650	721	749	775
Beechboro	138	146	154	162	170	178	264	369	480	582	668	735	762	786
ShortBeechboro	247	257	267	277	287	297	400	506	603	683	746	794	814	831
Canberra	174	183	192	201	210	219	319	431	540	634	709	764	788	808
ShortCanberra	255	276	287	298	309	320	431	538	631	706	764	806	825	840
JuniorCanberra	403	414	425	436	447	458	561	649	719	773	815	845	859	868

Risk Management Plan

Hazards

- Flying arrows
- Arrows stuck in ground
- Extracting arrows from target
- Bow breakage in service
- Arrow failure in service

Who might be harmed and how

- Flying arrows will travel at speeds of over 300 ft. per second and will cause serious personal harm to any individual they strike. Persons at risk are those entering the controlled range area together with participating archers searching for lost arrows on the range. Without the necessary control by the Range Officer and the awareness by archers of these situations, people could be harmed.
- Poorly shot arrows may become lodged in the grass with the back end or “nock” pointing upwards at an angle to the ground. Archers may accidentally contact the arrow with their foot when walking to retrieve arrows. This may result in a puncture wound to the archer.
- Extracting arrows from the target is achieved by grasping the shaft of the arrow with one hand while bracing with other hand on the target face. Another archer standing incorrectly behind the arrow pulling archer may be struck by the “nock” of the arrow during the withdrawal process. Again a puncture wound could result.
- It is rare for a bow to break in service since symptoms such as cracks or splinters will generally become apparent prior to bow breakage. Should such an unlikely event occur, the operating archer may receive contact from a piece of the broken bow. Harm could happen to the archer or those close by
- Arrows will sometimes fail at the extreme point of applied force, either leaving the bow (not frequently) or impacting the target (most likely). Greatest risk is to the archer when withdrawing the damaged arrow from the target, particularly with carbon arrows as slivers of carbon can penetrate the skin of the hand as does a splinter.

Control Measures

- Flying arrows released by archers on the range are to remain within the confines of the range. The range is to be delineated by adequate warning signs and flags which allow a safety zone (25 metres to each side of the targets and 50 metres behind the targets). The range is under the continuous control of the Range Captain who will order archers to cease shooting should a member of the public approach the range area.
- The Range Captain will control the retrieval of arrows by participating archers and will not allow shooting to recommence until all archers are safely behind the shooting line.

- Arrows stuck in the ground can be either in front of or behind the target. Archers need to be alert and observant when searching for these arrows. As a precaution no archer may participate unless they are wearing stout footwear capable of withstanding impact with the grounded arrow.
- Extracting arrows from the target face is the subject of an instruction procedure and involves no more than two people at any one time (one to the left of the target the other to the right). Other archers are not permitted to stand close to or behind those involved in the withdrawal process.
- Bow breakage seldom occurs since each participating archers' standard procedure involves the inspection of bows prior to any arrow being "nocked". Any visible signs of damage are to be assessed by the archer and if any doubt exists as to the suitability of the bow the matter is referred to the Range Captain for a ruling.
- Arrows may from time to time may exhibit the start of a fatigue failure as a circumferential line around the shaft. When this is detected at the equipment inspection stage by the archer, the arrow is discarded forthwith. Further, the offending arrow is purposely broken to avoid further use.

Putting Controls in Place

- Education of archers. Every archer in the group is taken in hand by a qualified instructor for a specific period. This period may vary and depend on the new archer's progress. The archer is given instructions (both technical and safety) addressing all of the above potential risks.
- This is followed up by the issuing of a handbook which identifies areas of risk, how to avoid them and how to participate in a safe and secure manner.

Control Review

- The Plan is under continual review and adjusted or modified if considered necessary.

By-Law 1: Code of Conduct

The AIM Over 50 Archery Group inc. is committed to providing a safe environment for the participation of Archers, spectators, and the public on or off the field. Angry, aggressive, or other inappropriate behaviour will not be tolerated.

- Display control and courtesy to all involved in the Sport.
- Respect the rights and worth of every person regardless of their gender or ability.
- Adopt appropriate and responsible behaviour in all interactions.
- Act with respect and objectivity and accept responsibility for your decisions and actions.
- Ensure your decisions and actions contribute to a harassment-free environment.
- Do not engage in or tolerate aggressive, harmful, or abusive behaviour.
- Respect the needs of other Archers.

Anyone who experiences (or witnesses) such behaviour including discrimination, harassment, bullying, or vilification etc should immediately report the matter/incident to a Committee Member.

The Committee will investigate the allegation(s) in the strictest of confidence and take the appropriate action.